
From: Michael D. Cohen <michael@mdcpc.com>
Sent: Thursday, August 24, 2017 11:43 AM
To: Jimenez, Joe
Attachments: August 2017 Non-Confidential Short Yamo Presentation.pptx

Proposal referenced in previous e-mail.

Yours,
Michael D. Cohen, Esq.
Essential Consultants, LLC.
30 Rockefeller Plaza
23rd floor
New York, New York 10112
1-212-872-9849 (NYC Office)
1-202-457-6117 (DC Office)
[REDACTED] (Cellular)
michael@mdcpc.com

Sent from my iPhone

YAMO

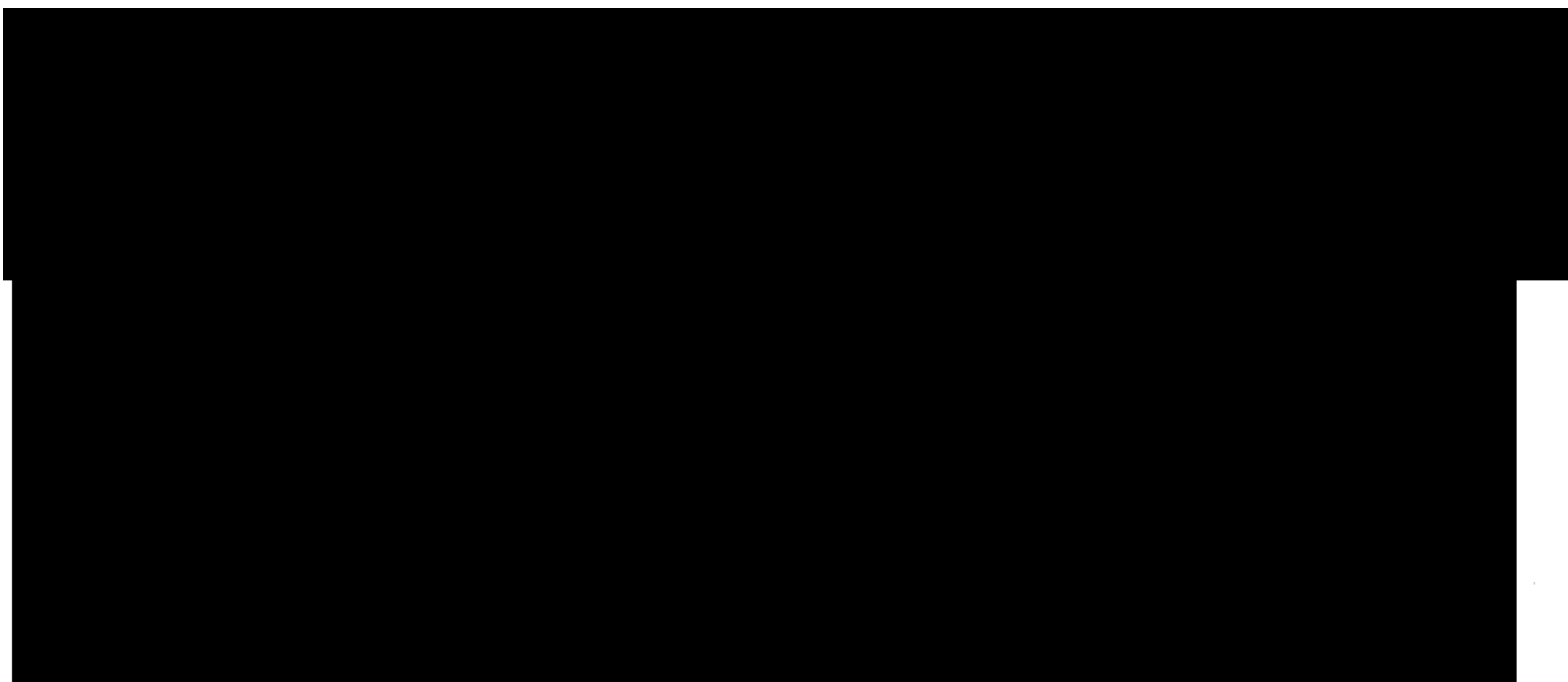
PHARMACEUTICALS

Investment Opportunity Discussion

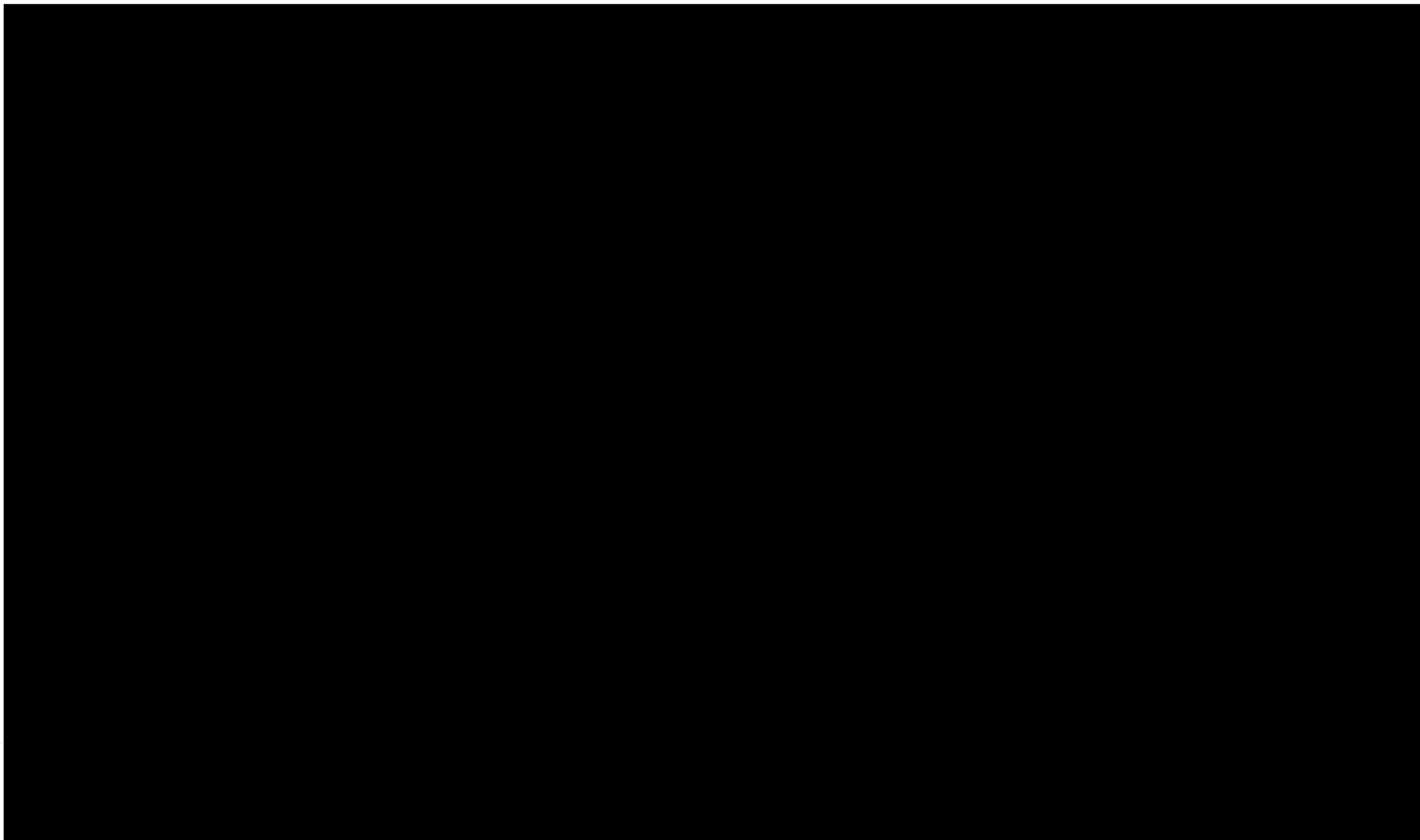
August 2017

Investment Opportunity

- Yamo Pharmaceuticals (“Yamo”), a New Jersey-based company, has developed L1-79, the first therapy observed to reduce the core symptoms of the Autism Spectrum Disorder (“ASD” or “Autism”), as assessed by commonly accepted and validated psychometric tests



Uses of Cash

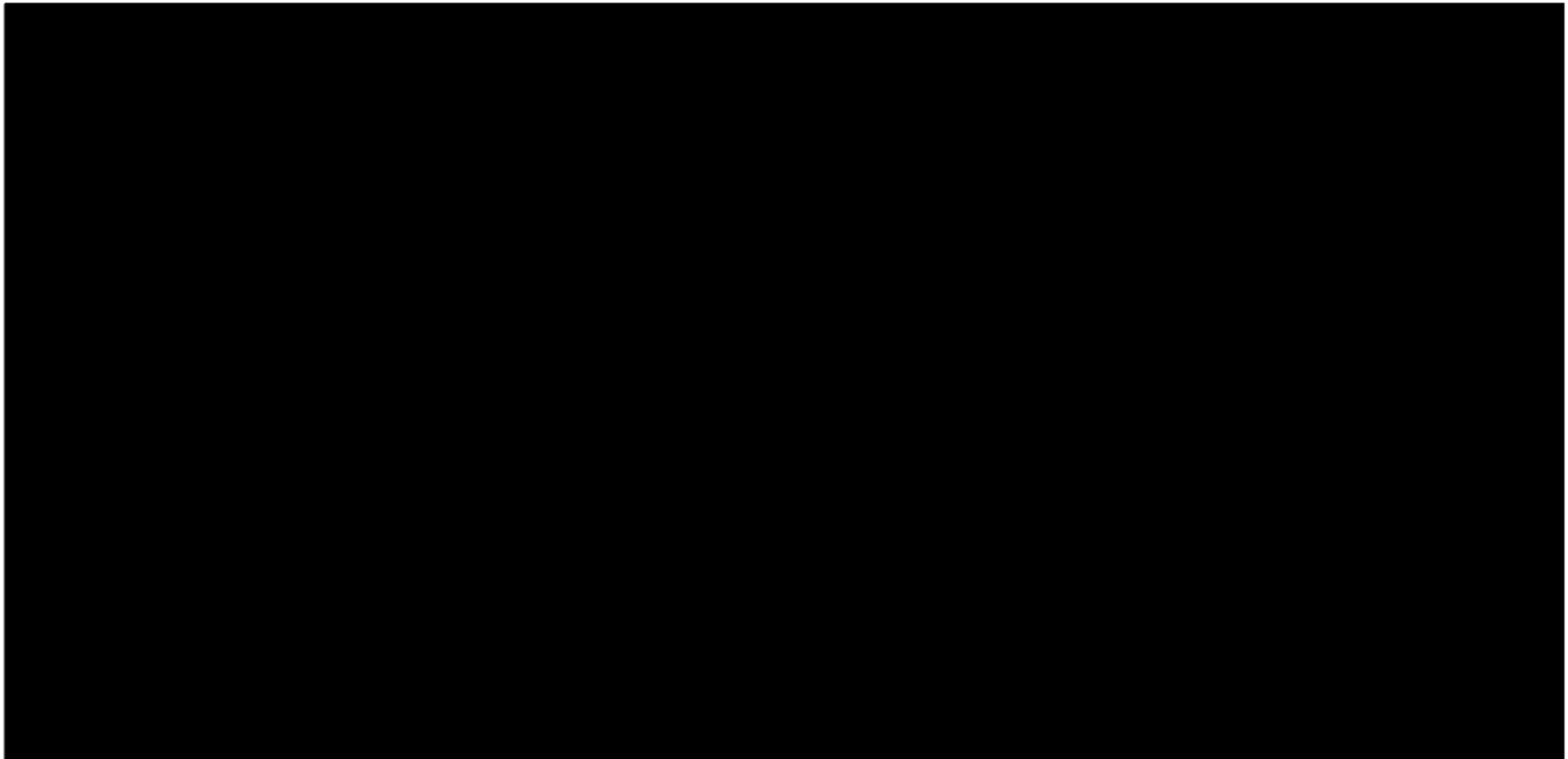




YAMO
PHARMACEUTICALS

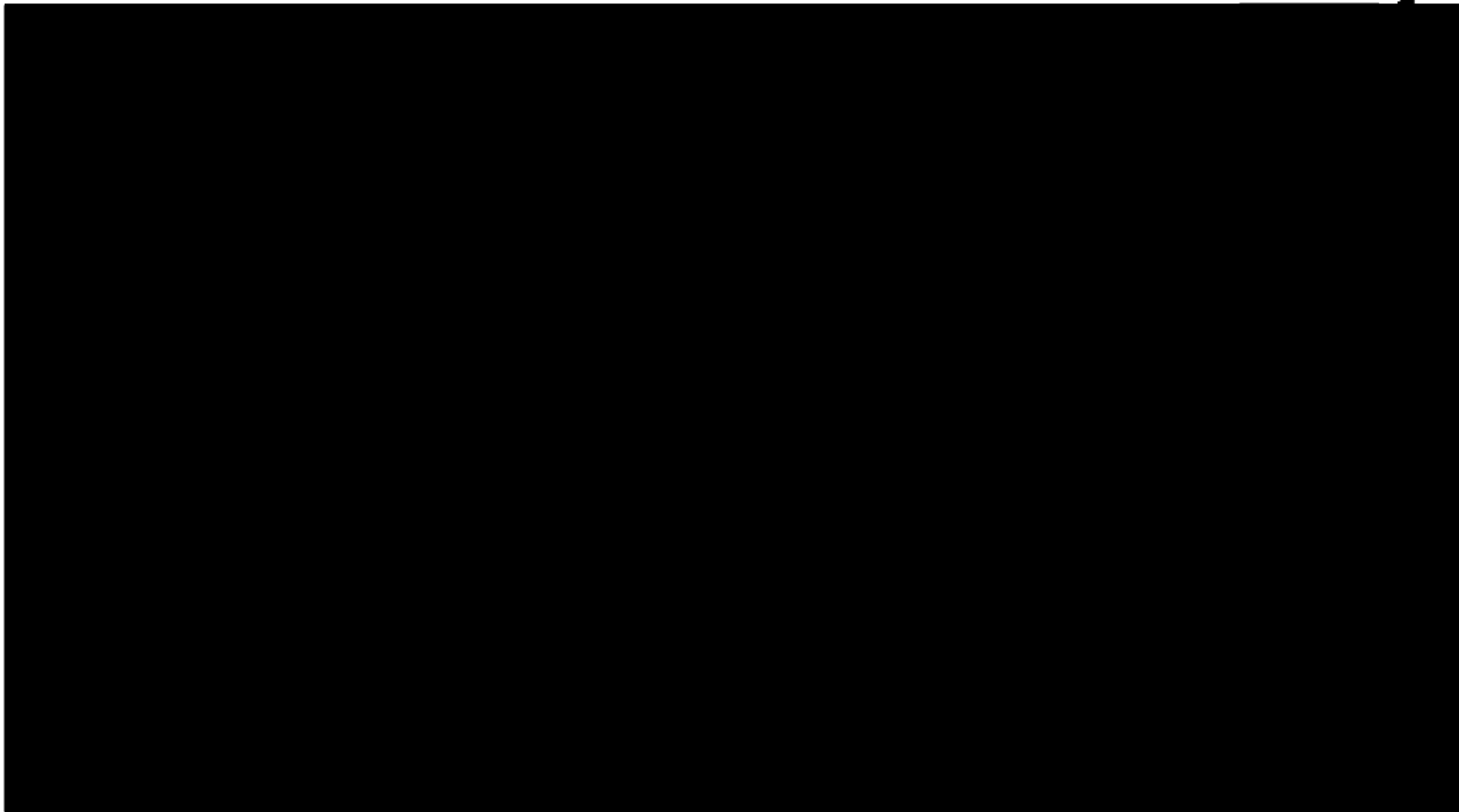
Yamo Treatment for Autism

- Yamo Pharmaceuticals, a New Jersey-based company, has developed L1-79, the first therapy observed to reduce the core symptoms of Autism, as assessed by commonly accepted and validated psychometric tests



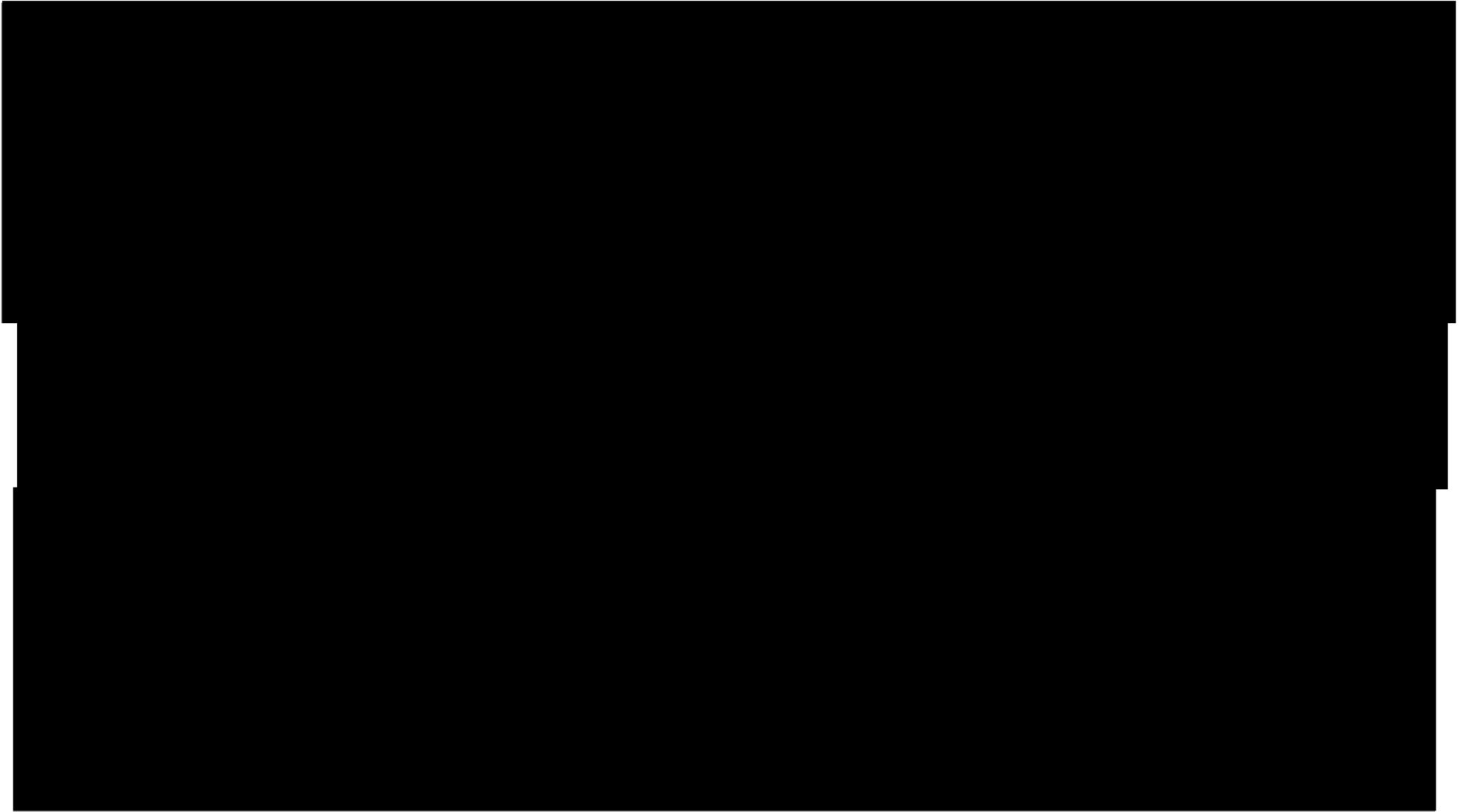
About Autism

YAMO
PHARMACEUTICALS



Current Status & Next Steps

YAMO
PHARMACEUTICALS



Yamo Team

YAMO
PHARMACEUTICALS



Chuck Bramlage, Chief Executive Officer

- Mr. Bramlage was the Chief Executive Officer of Pearl Therapeutics from 2011 through 2016 which was sold in 2013 to Astra Zeneca for up to \$1.15 billion
- Previous positions included: COO of Pharmaceutical Products at Covidien plc., President of European operations at Valeant Pharmaceuticals International, President/CEO of BattellePharma, Inc., Vice President of Respiratory Global Commercial Development and Vice President of U.S. respiratory and cardiovascular marketing for GlaxoSmithKline
- Chuck has been involved in 28 product launches in 15 therapeutic areas
- Mr. Bramlage holds an MBA from the University of Dayton and a BS Administrative Science in Marketing from The Ohio State University



Dr. John Rothman, Chief Operating Officer

- Dr. Rothman has 30+ years of experience in product development across many disciplines and markets
- From 2005 to 2013, he was Executive Vice President of Science & Operations at Advaxis, where he was responsible for R&D, toxicology, regulatory, chemistry, data management, manufacturing and intellectual property
- As Director of Clinical Research at Roche for various clinical sections, he oversaw numerous development programs that resulted in marketed drugs, including Interferon- α , Rocephin, Coactin, Rimadyl, Larotid, Dalmane, Rimantidine, Versed and others
- Dr. Rothman conducted the 1st clinical trial in AIDS and wrote the first biologics application submitted (and approved) by the FDA
- Dr. Rothman attended the Tulane University School of Medicine, where he studied Pharmacology in the laboratory of Dr. Louis Ignarro (Nobel Prize in Medicine, 1998) and conducted his graduate research at the New Orleans VA Hospital in the laboratory of Dr. Andrew Schally (Nobel Prize in Medicine, 1977)



Eugene Prahin, Chief Financial Officer

- Since 2008, Mr. Prahin has been with Columbus Nova, a multi-strategy investment firm, as the Senior Vice President of Finance, with responsibilities including operations, planning and analysis, management reporting, performance analysis, investor relations and investment management
- From 2005 to 2008, he was a Manager in the Structured Finance Group of GSC Group where he built and managed the Group's operations; prior to his MBA, Mr. Prahin worked with the Fixed Income Derivatives Group at Lehman Brothers
- Mr. Prahin holds an MBA from the London Business School (2005) and a B.Sc. in management, with a focus in finance and international business, from the State University of New York at Binghamton (1998)

Key Shareholders



Steve Hoffman, Founder

- Mr. Hoffman has over 25 years experience in management and technical positions with companies in the chemistry, aerospace and laser optics fields
- Since 2011, Mr. Hoffman has served as the Chief Executive Officer of Tyme Technologies, as well as its predecessor, Luminant, a pharmaceutical company focused on creating medicines that specialize in using the body's immune system to treat cancer
- He was a co-founder and, from 1993 to 2007, Chief Technology Officer of Mikronite Technologies Group Inc., a developer, licensor and marketer of material surfacing technologies for various manufacturing processes and applications where he supervised implementation of proprietary technology and received numerous patents
- Mr. Hoffman attended New York University and Rutgers University with a concentration in mechanical engineering from 1980 to 1984 and continued his studies under the direct supervision of the chairman of the physics department at the University of Michigan, specializing in physics and electro-optics

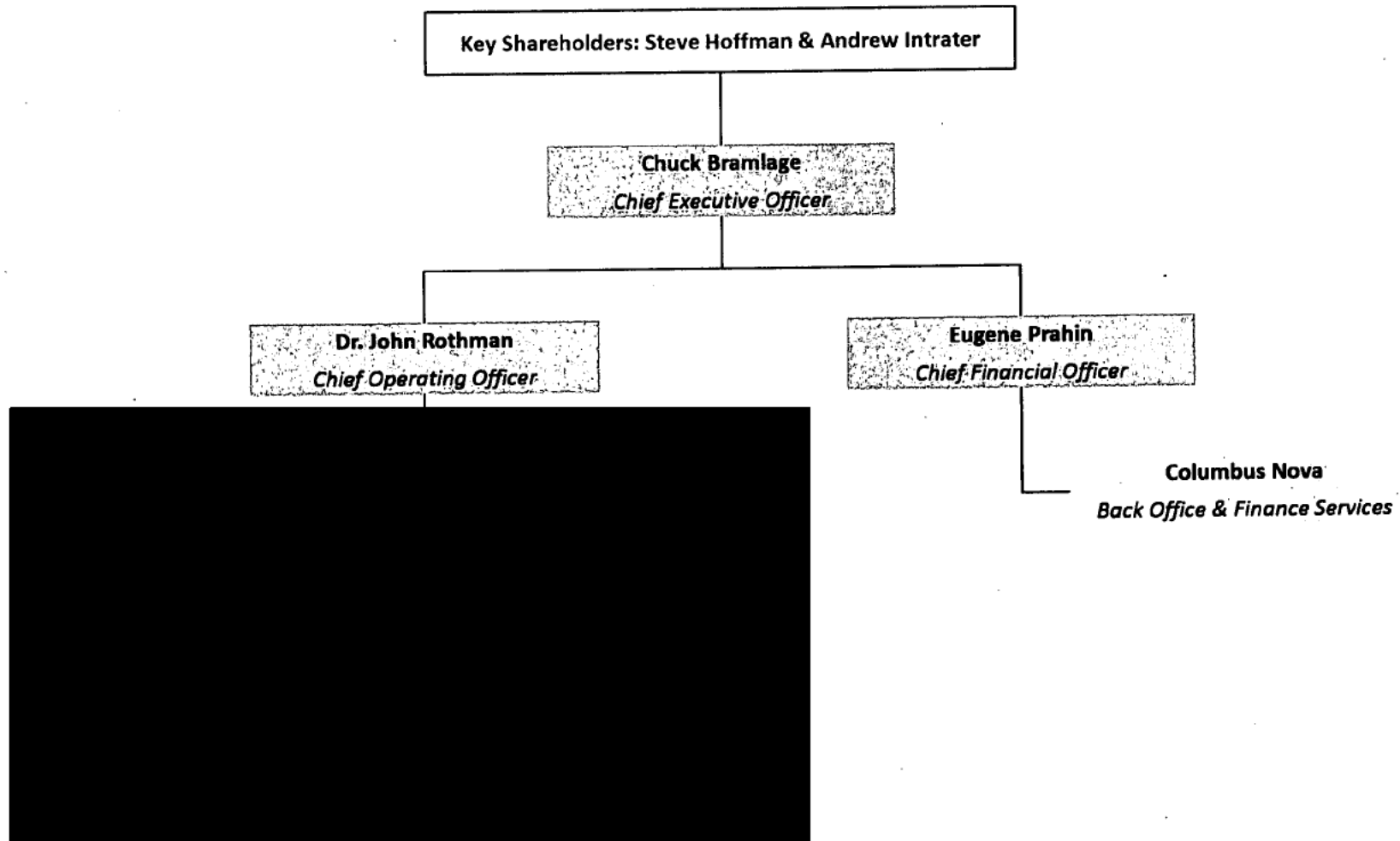


Andrew Intrater, Investor and Business Advisor

- Mr. Intrater has over 30 years of general management and transaction experience obtained through leadership roles in the technology and asset management sectors, as well as over 20 years of service on the boards of directors of public companies
- Mr. Intrater is currently the Chief Executive Officer of Columbus Nova, a multi-strategy investment firm he founded in 2000; his activities at Columbus Nova include serving as the Managing Director of Columbus Technology Partners (CNTP), a global, multi-stage, technology investment firm he co-founded in 2013 and a Partner of Columbus Nova MB (CNMB), a real estate investment management, financial advisory and alternative asset platform
- Mr. Intrater started his career in 1985 when he founded ATI, the predecessor of Oryx Technology Corp., which, as its President and Chief Operating Officer, he grew into a respected manufacturer of semiconductor test equipment; he led the company's IPO in 1994 and oversaw two strategic acquisitions, including the purchase of Zenith's power converter division; he also introduced a transportable, secondary ion mass spectrometer to QA groups in the hard disk and magnetic read/write head markets
- Mr. Intrater's Board memberships include Cyalume Technologies (CYLU), Rhapsody International and Eccentex Corporation. Mr. Intrater also serves on advisory committees of Core Capital Partners, RSV Venture Partners and i2BF Global Ventures, as well as on the executive committee of the USC Shoah Foundation. Mr. Intrater is also a former Director and Member of the Executive Board of the Renova Group, a multi-national, Zurich-based industrial holding with interests in energy, base metals and mining industries
- Mr. Intrater holds a B.S. in Chemical Engineering from Rutgers University and performed graduate studies in Materials Science at Columbia University

Yamo Organizational Structure

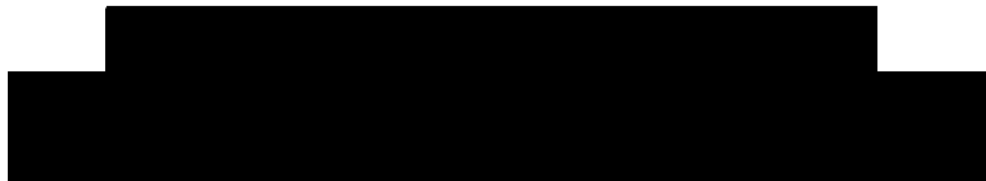
YAMO
PHARMACEUTICALS



Contact Information

YAMO
PHARMACEUTICALS

Chuck Bramlage
Chief Executive Officer



Eugene Prahin
Chief Financial Officer

